



Backgrounder on the Ontario Blue Box Program Transition to Producer Responsibility

Updated Version 2

Outline

Producer Responsibility

Legislative Framework

Current vs. Future

Key Concepts & Terms

Eligible Sources

Non-Eligible Sources

Service Standards

Designated Materials

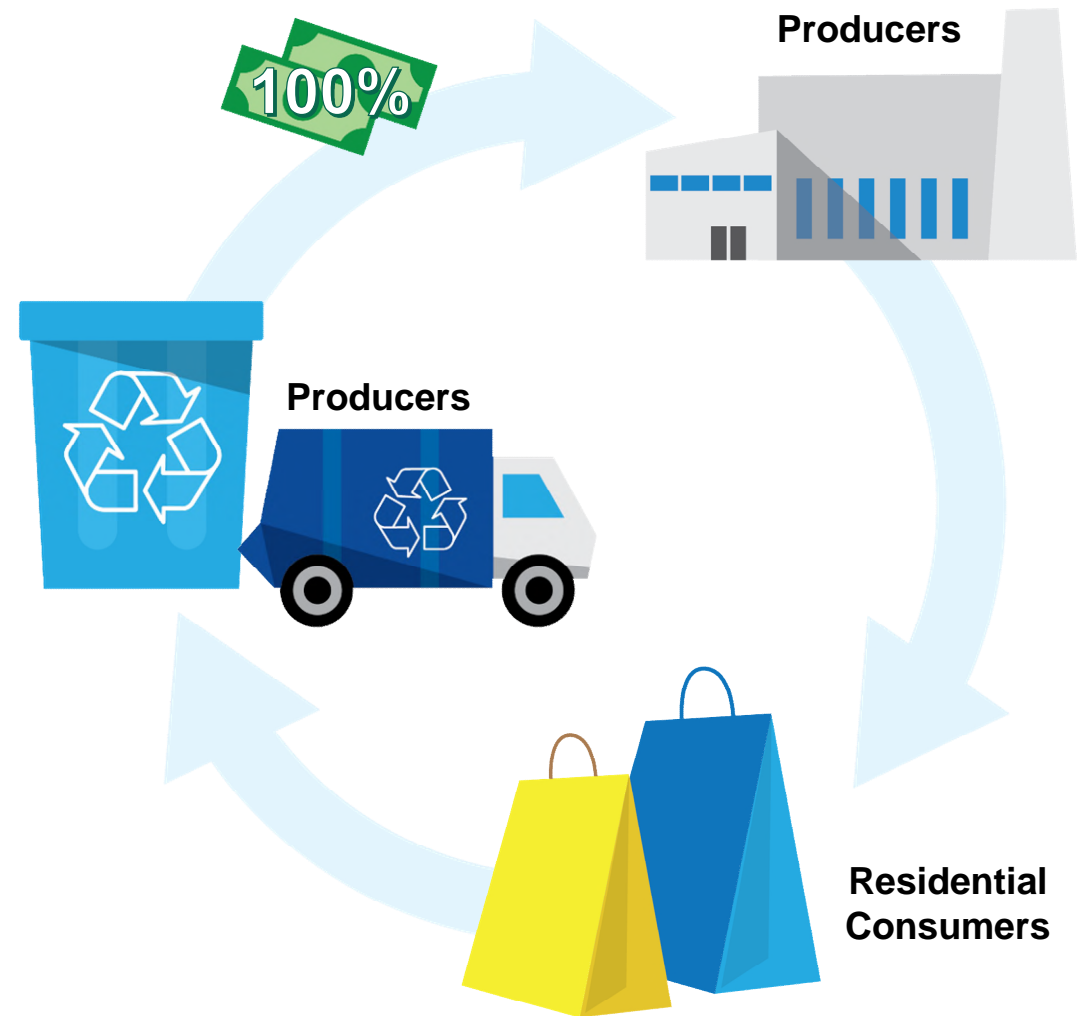
Targets

Timelines

Glossary

What is Producer Responsibility?

- A regulatory approach to waste management, where producers (companies that make and import products) are responsible for the waste generated from their products and packaging
- In Ontario, the blue box program is transitioning from a model of shared industry funding, to one of full producer responsibility where producers are operationally and financially responsible
- Additional detailed information may be available on the websites of the [CIF](#), [RPRA](#), [AMO](#), or the [Government of Ontario](#).



Outline

Producer Responsibility

Legislative Framework

Current vs. Future

Key Concepts & Terms

Eligible Sources

Non-Eligible Sources

Service Standards

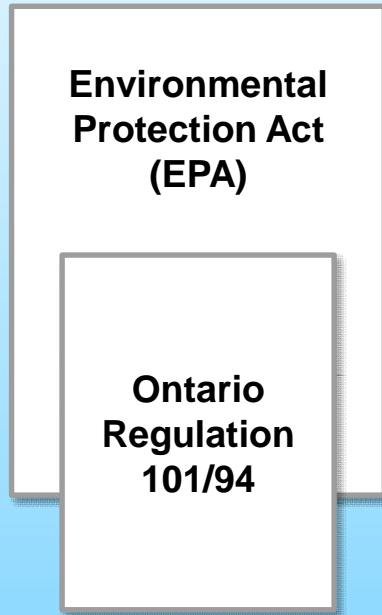
Designated Materials

Targets

Timelines

Glossary

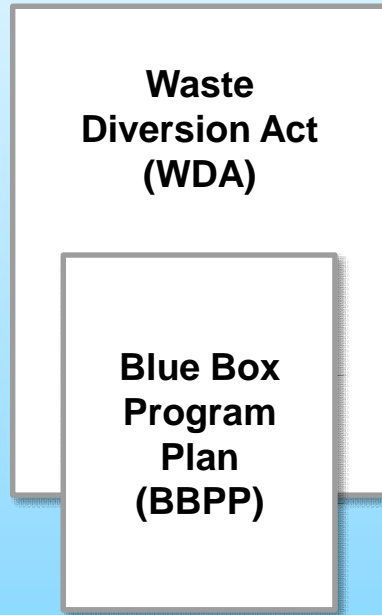
Legislative Framework Summary



Full Municipal Responsibility

Operational: 100% Municipalities/First Nations

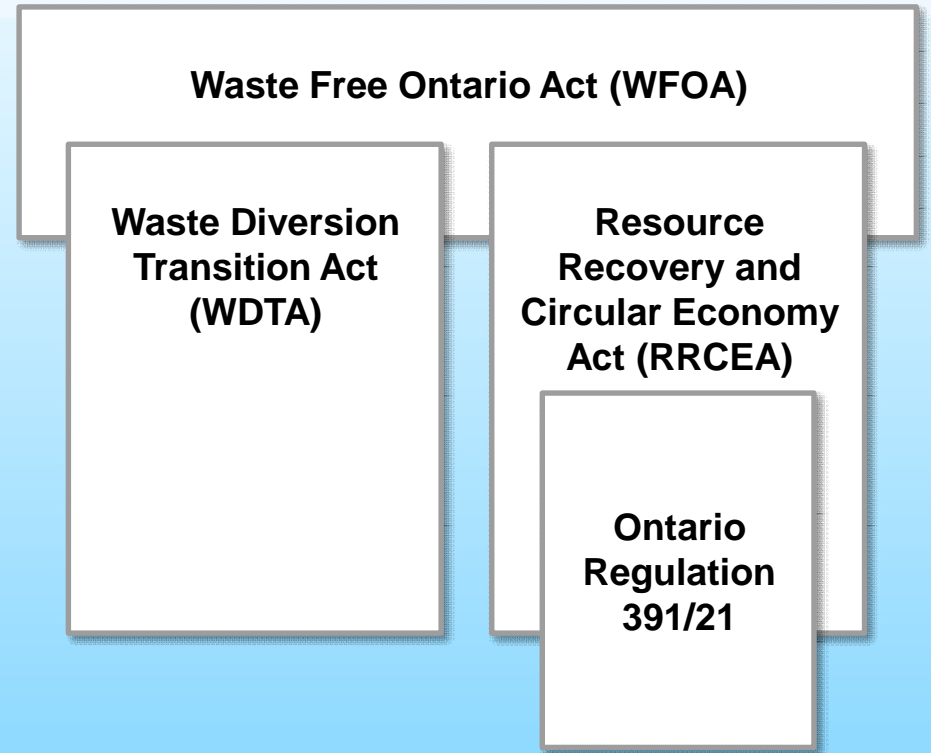
Financial: 100% Municipalities/First Nations



Shared Responsibility

Operational: 100% Municipalities/First Nations

Financial: 50% Municipalities/First Nations
50% Stewards



Full Producer Responsibility

Operational: 100% Producers

Financial: 100% Producers

EPA, O.Reg. 101.94

Full Municipal Responsibility



WDA, BBPP

Shared Responsibility



WFOA, WDTA, RRCEA, O.Reg.391/21

Full Producer Responsibility



| | | | |
|--------------------|-----------------------------------|---|---------------|
| Operational | 100% Municipalities/First Nations | 100% Municipalities/First Nations | 100% Producer |
| Financial | 100% Municipalities/First Nations | 50/50 Municipalities/First Nations + Stewards | 100% Producer |

Outline

Producer Responsibility

Legislative Framework

Current vs. Future

Key Concepts & Terms

Eligible Sources

Non-Eligible Sources

Service Standards

Designated Materials

Targets

Timelines

Glossary

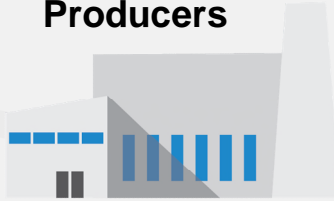
Roles & Responsibilities

Industry Funding Organization
(Stewardship Ontario)



Fees to SO based on reported materials sold in Ontario

Producers



Funding of approx. 50% of annual net operating costs

RPRA determines SO payment obligation and provides oversight



Regulatory Authority (RPRA)

Report program performance and costs to RPRA through Datacall



Municipalities & First Nation Communities

Service provision via Municipal assets or contracts

Service providers



Promotion & Education



Collection



Processing



Roles & Responsibilities

| Responsibility | Current/Pre-Transition: Shared Industry Funding | Future/Post-Transition: Producer Responsibility |
|---|---|---|
| <p>Operational</p> <ul style="list-style-type: none"> • Collection • Processing • Promotion & Education | <p>Local governments (Municipalities & First Nation Communities)</p> <ul style="list-style-type: none"> • Service provision via municipal resources/assets or contracts | <p>Producers/PROs</p> <ul style="list-style-type: none"> • Service provision via contracts with private service providers |
| <p>Financial</p> | <p>Shared</p> <ul style="list-style-type: none"> • Local governments • Producers, through Industry Funding Organization | <p>Producers</p> <ul style="list-style-type: none"> • Fully financially responsible for collecting, transporting, and processing designated materials from eligible sources |
| <p>Reporting</p> | <p>Shared</p> <ul style="list-style-type: none"> • Local government reports program performance and costs • Producers report tonnages sold into marketplace | <p>Producers/PROs</p> <ul style="list-style-type: none"> • Reporting to RPRA on material supplied into marketplace and tonnages recovered |

Outline

Producer Responsibility

Legislative Framework

Current vs. Future

Key Concepts & Terms

Eligible Sources

Non-Eligible Sources

Service Standards

Designated Materials

Targets

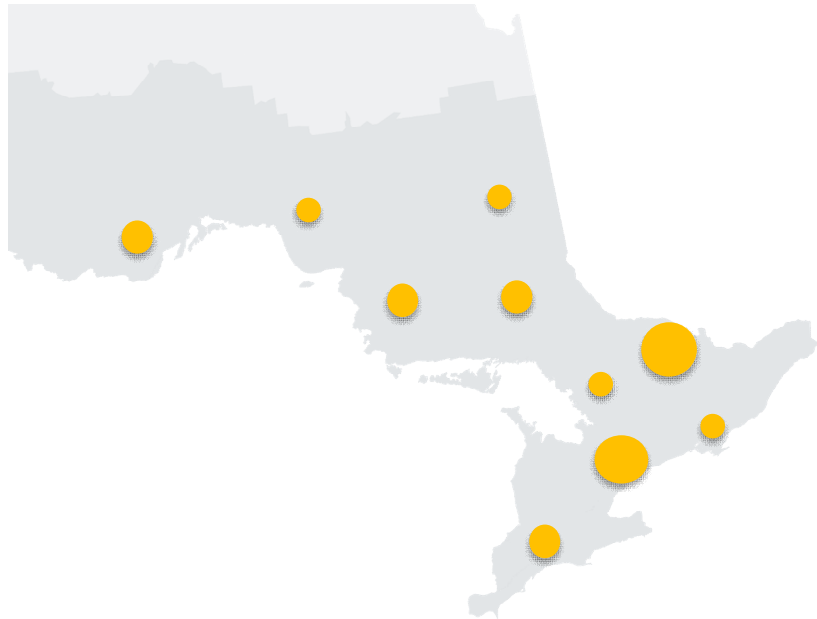
Timelines

Glossary

Eligible Community vs. Eligible Source

Eligible Community

- a local municipality or local services board area that is not located in the Far North, or
- a reserve,
 - that is not located in the Far North, and
 - is registered by a First Nation with the Authority



Eligible Sources

- Property types, as defined under O. Reg 391/21, (e.g., residence, apartment buildings) that will receive service
 - See “Eligible Sources” section for further details



Transition Period vs. Post-Transition

Transition Period

- July 1, 2023 to December 31, 2025
- Producers will assume operational and fiscal responsibility for all Eligible Communities throughout the Transition Period on dates provided by the Ministry
- Producers will be responsible for communications, replacing blue boxes and dealing with complaints/concerns from residents
- Township of McNab/Braeside decided to fully divest their responsibility and opt out of providing continued services through the transition.

Post Transition

- January 1, 2026 & thereafter
- Producers will be fully responsible for operating and financing the blue box program in all Ontario municipalities
- Producers will be responsible for communications, replacing blue boxes and dealing with complaints/concerns from residents
- Producers will have increased responsibilities and targets as set out in O. Reg 391/21

2023

2024

2025

2026

Producers vs. Producer Responsibility Organizations (PROs)



Producers

The brand holders, importers, or retailers of products that contain blue box materials

Any company that supplies products (containing packaging, paper products and packaging-like products) into the Ontario market, including online sales. Includes:

- Grocery store foods with packaging (cereals, cookies, frozen foods, dairy products)
- Retail stores items with packaging (cosmetics, games, household wares, dog and cat foods)
- Fast food packaging (burgers, fries, pizza, pop cans, water bottles)



Producer Responsibility Organization (PRO)

The Blue Box legislation allows for more than one organization/entity (called a Producer Responsibility Organization - PRO) to represent the producers of paper and packaging products

Producers may collaborate to meet their requirements and responsibilities in the new regulation under a PRO

Each Producer decides which PRO to join

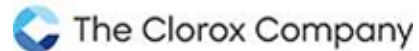
Producers vs. Producer Responsibility Organizations (PROs)



Producers



Producer Responsibility Organization (PRO)



CIRCULAR
MATERIALS

(Source: CircularMaterials.ca: Our Founders)



CIRCULAR
MATERIALS

Circular Materials

- Currently operating in ON with expansion plans in other Canadian jurisdictions
- Known as Circular Materials Ontario (CMO) in ON
- Blue box materials only



RYSE

- Jurisdiction in Ontario only
- Blue box materials and tires



Canadian Beverage Container
Recycling Association

Canadian Beverage Container Recycling Association (CBCRA)

- Multi-jurisdictional within Canada (MB, ON)
- Containers only
- Public space only (municipal locations)

Circular Materials Ontario (CMO)

- As the majority PRO in Ontario, Circular Materials Ontario (CMO) is responsible for the **Common Collection System**
 - Will procure & award agreements for collection & consolidation of blue box materials
 - Has hired Reverse Logistic Group (RLG) to help arrange and manage its agreements
- Eligible Communities must share critical details about their Eligible Sources prior to the transition period to ensure a smooth handover of responsibility



CIRCULAR
M A T E R I A L S



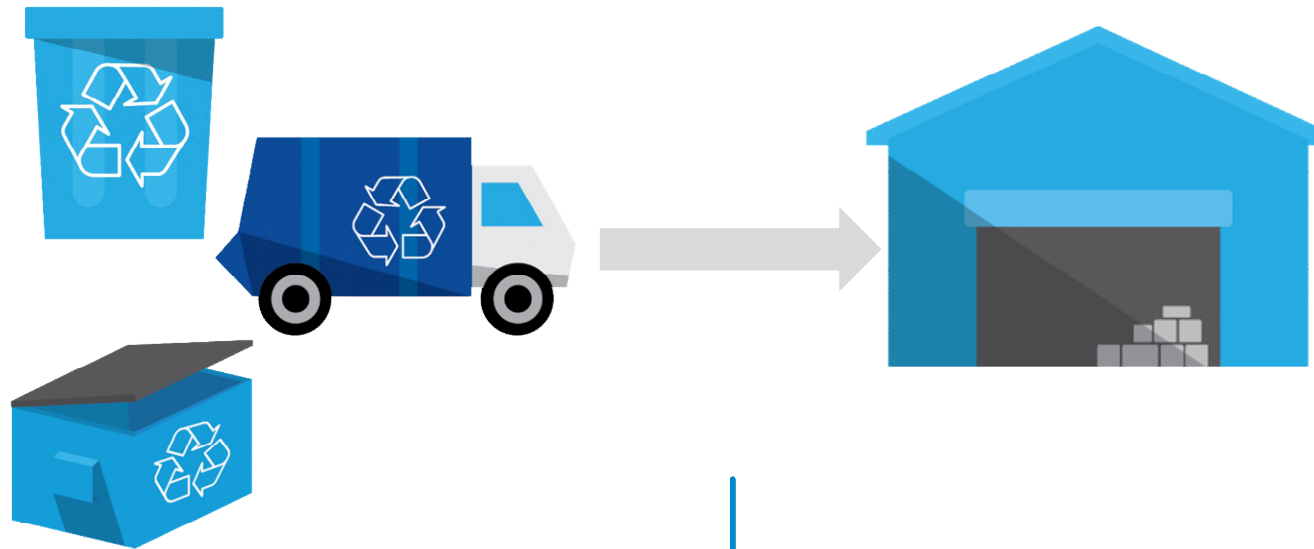
REVERSE LOGISTICS GROUP

Common Collection System

Collection

PROs will ensure curbside & depot collection for Eligible Sources

Blue Box Collection Service



Consolidation

PROs will require collection operators (curbside & depot) to deliver materials to a designated RF*

Materials are consolidated at the RF

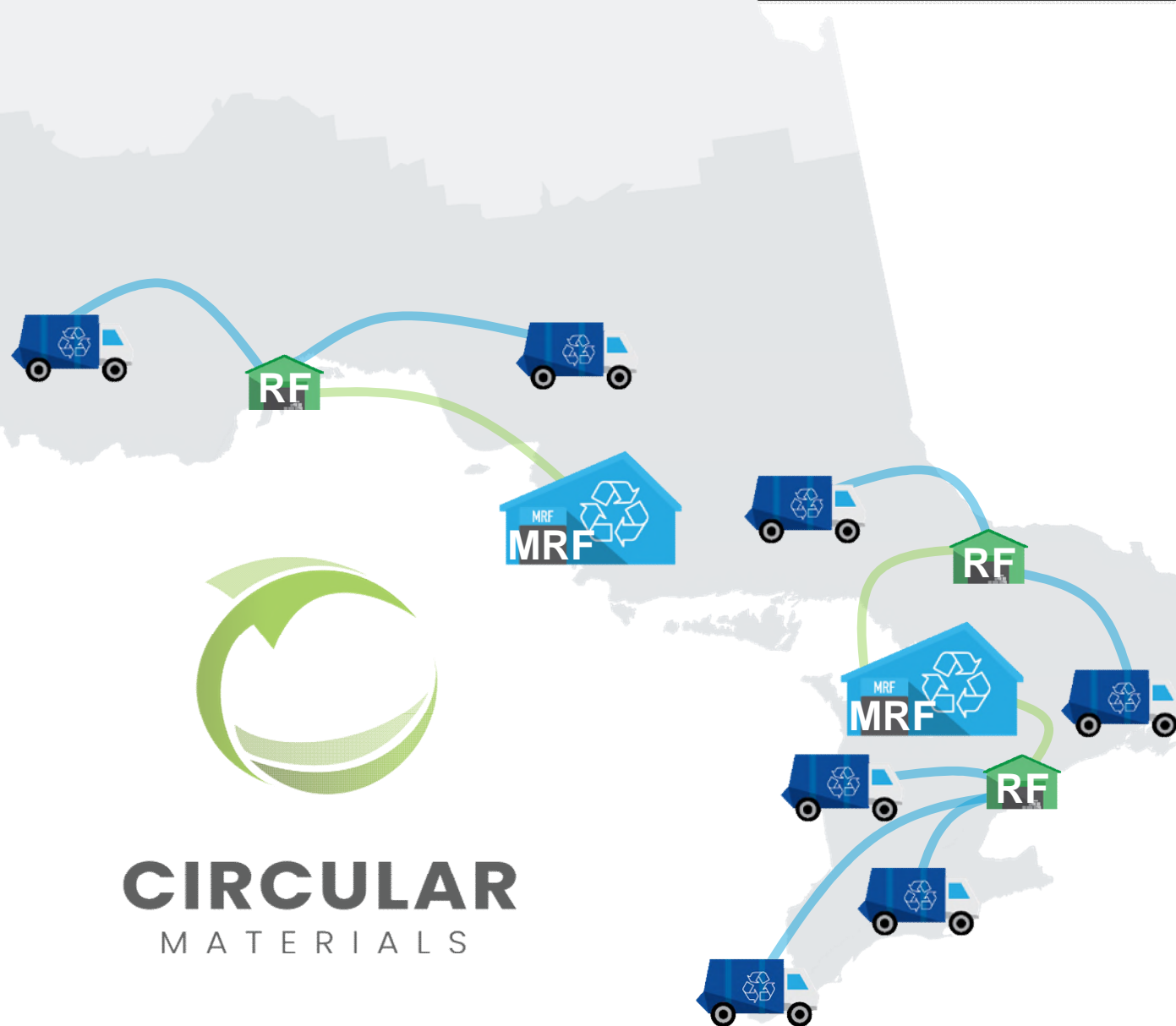
PROs will transfer the consolidated materials to a material recycling facility (MRF)

*PRO (CMO) determines RF locations

Common Collection System

= Collection & hauling to a designated Receiving Facility (RF) and consolidation of materials at the RF

Common Collection System



Circular Materials will oversee the **Common Collection System**

- Ensure curbside & depot collection for all Eligible Sources throughout the Province
- Determine locations of and designate **Receiving Facilities (RF)** for collection operators to deliver materials to for consolidation
- PROs transfer consolidated materials to a **Material Recycling Facility (MRF)**

Outline

Producer Responsibility

Legislative Framework

Current vs. Future

Key Concepts & Terms

Eligible Sources

Non-Eligible Sources

Service Standards

Designated Materials

Targets

Timelines

Glossary

Eligible Sources

Local municipalities with 5,000+ population



Collect or accept from same sources as residential garbage



50% funding does not include costs for Industrial, Commercial and Institutional (IC&I), even if delivered through municipal program

([O. Reg 101/94 s. 7](#), [BBPP p. 59](#))

All Ontario communities outside of the [Far North](#), including First Nation communities.



single-family homes



seasonal dwellings



multi-unit residential buildings



public & private schools



specified retirement & long-term care homes



specified public spaces

([O. Reg 391/21 s. 1 & 4](#))

Eligible Sources



Transition Date to December 31, 2025:

- PROs to maintain servicing as of August 15, 2019 for eligible sources already serviced and new developments. PROs will not be required to collect from non-eligible sources



January 1, 2026:

- PROs to extend collection to all non-serviced communities outside the Far North, and non-serviced eligible sources, if registered

Eligible Sources

Specified retirement & long-term care homes



- Includes retirement homes and long-term care homes that are either:
 - Operated by a municipality,
 - Non-profit, or
 - Included in the WDTA blue box program on August 15, 2019 (collection provided by the community on August 15, 2019)

Specified Public Spaces

- Blue box material from public space receptacles that were collected under the WDTA Blue Box program as of August 15, 2019, will be collected (i.e., those along residential routes)
- Public space - outdoor area in a park, playground or beside/on a sidewalk, a public transit station or stop under municipal or provincial jurisdiction
- Producers will provide blue box public space receptacles and repair/replace any that are damaged



- Required number of public space blue box receptacles determined by accessibility targets based on a density formula
- Public spaces - outdoor areas in parks, playgrounds, sidewalks, public transit stops or stations
- If the # of bins is less than one, at least one blue box receptacle shall be provided

| Population | Formula | # of Bins |
|------------------|---|---------------|
| ≥ 500,000 | Population ÷ 400 | 1,250+ bins |
| 30,000 – 499,999 | Population ÷ 600 | 50 – 833 bins |
| 5,000 – 29,999 | Population ÷ 800 | 6 – 38 bins |
| ≥ 5,000 | Population ÷ 1000 (but no less than one) | 1 – 5 bins |

Public Spaces: PROs



Circular Materials (CMO)

- CMO will be responsible for public space collection, as outlined in O. Reg 391/21 (see previous slide for details)



Canadian Beverage Container Recycling Association (CBCRA)

- CBCRA is investigating opportunities to collect beverage containers in other public settings, beyond what's required (e.g., arenas, libraries, malls, stadiums)

Outline

Producer Responsibility

Legislative Framework

Current vs. Future

Key Concepts & Terms

Eligible Sources

Non-Eligible Sources

Service Standards

Designated Materials

Targets

Timelines

Glossary

Non-Eligible Sources



50% funding does not include costs for Industrial, Commercial and Institutional (IC&I), even if delivered through municipal program



Industrial or commercial properties



Not-for-profit organizations



Municipal buildings or facilities (e.g., libraries, arenas)



Daycare



Places of worship

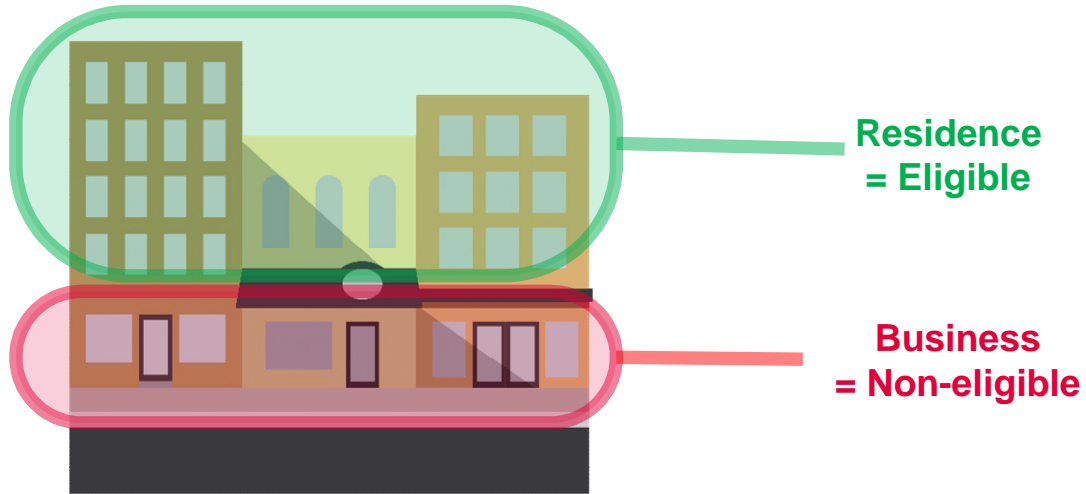


Campgrounds and trailer-parks (without permanent or seasonal households)

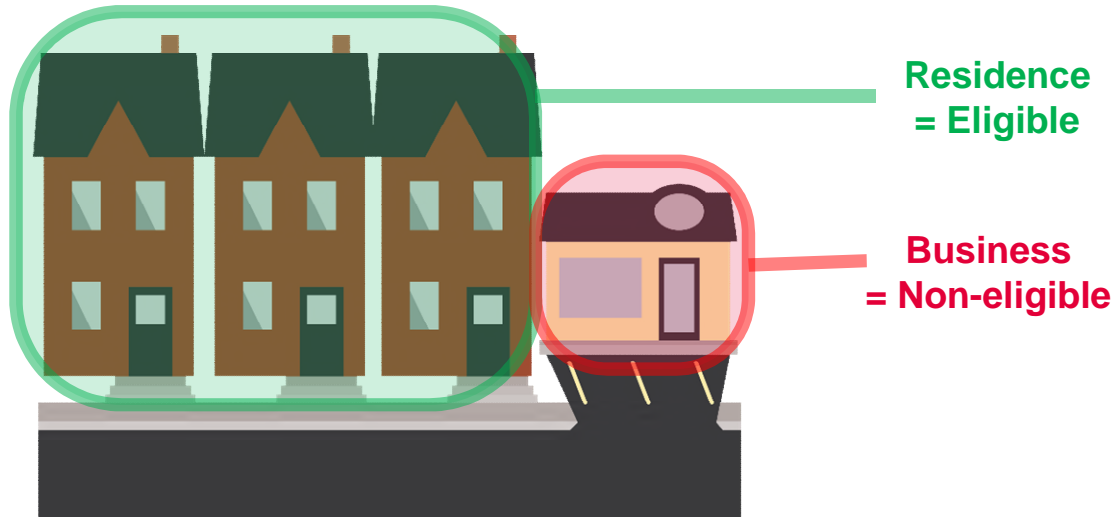


Commercial Farms

Non-Eligible Sources embedded along routes



Mixed Use Properties



Commercial buildings along residential routes

There are some properties that have both eligible and non-eligible materials. Non-eligible sources need to be separated from residential collection and serviced in an alternative way, starting in 2026.

Mixed Use Properties:

- Residential apartments on top of a business are considered **eligible**
- Industrial or commercial property underneath the residential building are **non-eligible**
- Found in Business Improvement Area (BIA) or along residential routes

Commercial Buildings Along Residential Routes:

- Residential buildings (single family homes/ multi-unit residential buildings) are **eligible**
- Industrial or commercial properties (e.g., coffee shop, convenience store) are **non-eligible**

Non-Eligible Sources

- PROs are not responsible to service these sources
- Currently, some non-eligible sources are serviced through residential blue box programs (not covered in 50% Shared Funding model)
 - During the Transition Period, PROs will allow continued service to non-eligible sources, if appropriate arrangements are made:
 - Communities that **opt out** can pay the PROs private sector service provider, if an agreement is made
 - After the Transition Period, PROs will not allow blended collection of non-eligible and eligible materials
 - Communities to decide whether to continue servicing these non-eligible sources separately



Outline

Producer Responsibility

Legislative Framework

Current vs. Future

Key Concepts & Terms

Eligible Sources

Non-Eligible Sources

Service Standards

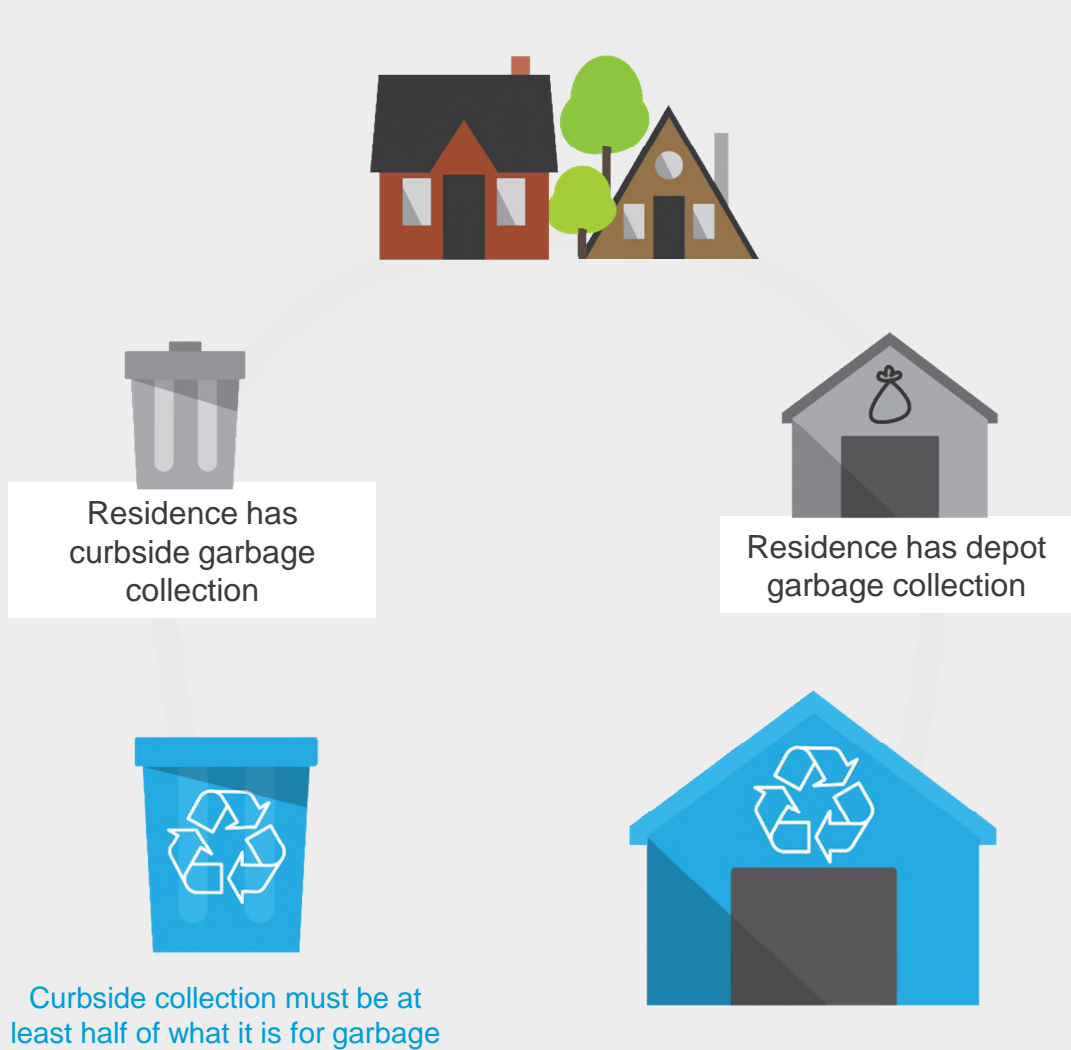
Designated Materials

Targets

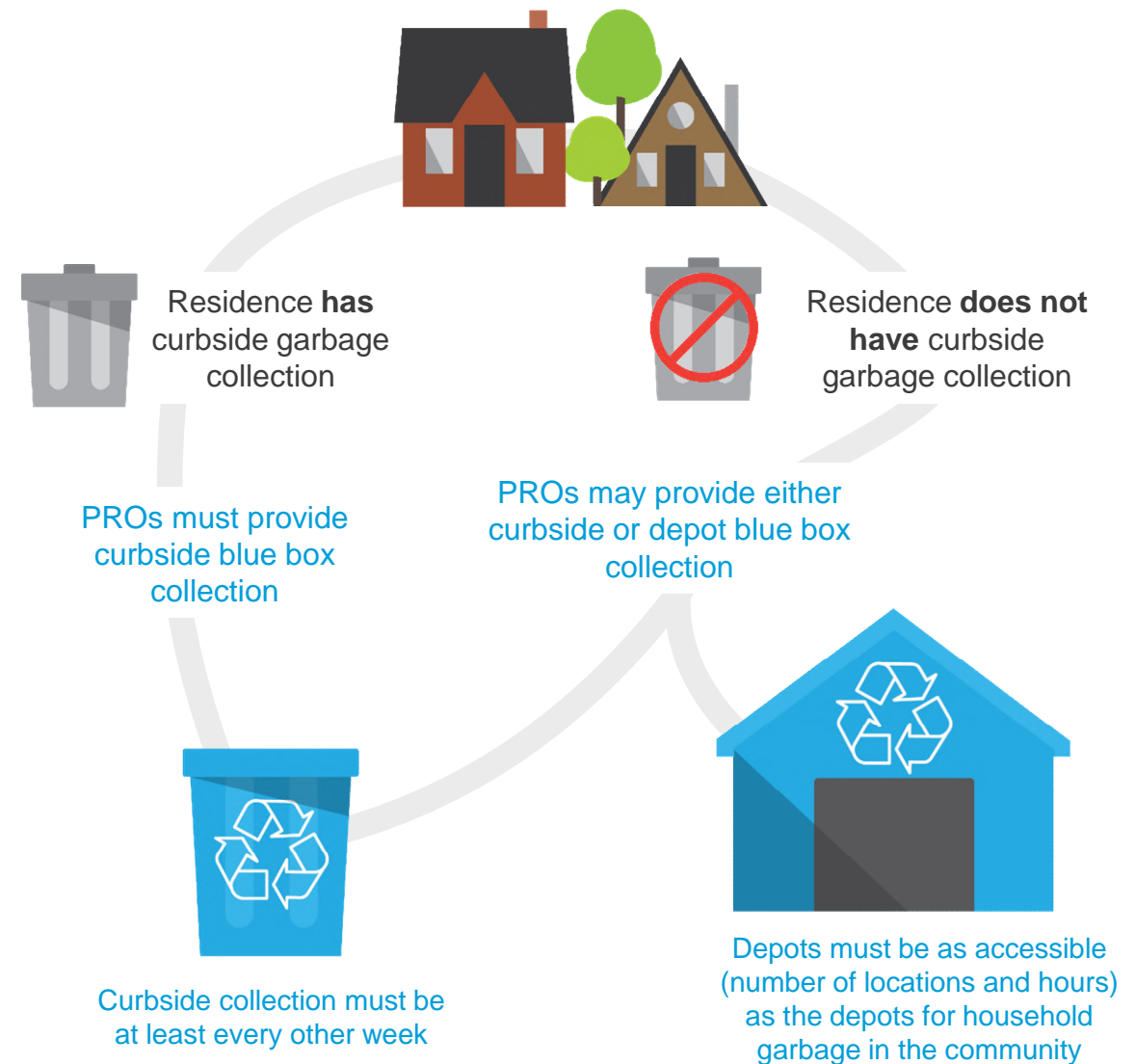
Timelines

Glossary

Service Standards - Residences



(O. Reg 101/94 s. 7 (2) & (5))



(O. Reg 391/21 s. 20-26)

Service Standards - Residences



Transition Date to December 31, 2025:

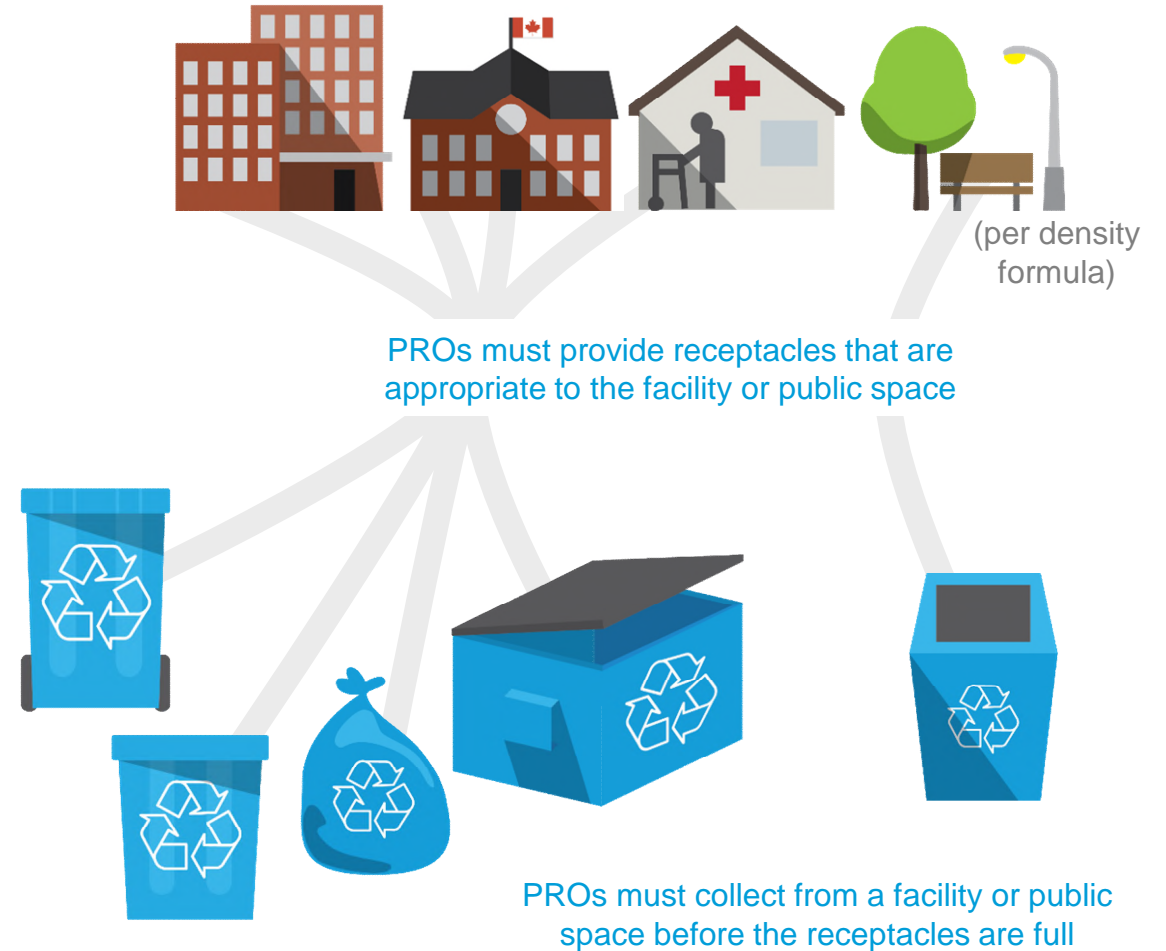
PROs to collect curbside from all residences that received curbside as of August 15, 2019, at the same or increased frequency.

January 1, 2026:

PROs may serve all residences with curbside collection (not supplemented by depots) or have only depot collection to residences that do not have curbside garbage collection.

Service Standards – Facilities & Public Spaces

O. Reg. 101/94 does not specify collection of blue box materials from facilities or public spaces, other than multi-residential buildings.



Outline

Producer Responsibility

Legislative Framework

Current vs. Future

Key Concepts & Terms

Eligible Sources

Non-Eligible Sources

Service Standards

Designated Materials

Targets

Timelines

Glossary

Designated Materials

All of these:



Aluminum cans



Glass bottles & cans



PET plastic bottles



Steel cans



Newsprint

for food and beverages

At least two of these:



Aluminum foil



Boxboard & paperboard



Cardboard



Polystyrene containers & packing materials



Office paper



Polycoat cartons



Magazines



Paper cups & plates



Plastic film



Rigid plastic containers (HDPE, PS)



Telephone Directories



Textiles

Varies by Municipality

(O. Reg 101/94: Schedule 1)

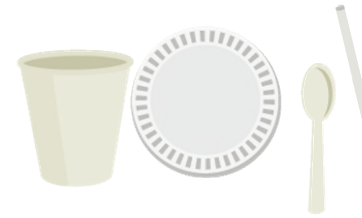
Packaging, Paper Products, & Packaging-like products:



✓ Typical “blue box packaging” items, made of paper, glass, metal or plastic



✓ Printed and un-printed paper (newspaper, magazines, flyers, office paper)



✓ Single-use products used for consumption (e.g., straws, cutlery, plates, coffee cups)



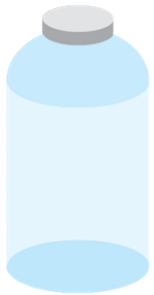
✓ Single-use products used for containment (e.g., aluminum foil, plastic bag)

Consistent across the Province

(O. Reg 391/21 s. 2)

Designated Materials

Each material will be assigned a category:



Beverage Containers
(including made of glass, paper, metal or plastic)



Glass



Flexible Plastic



Rigid Plastic



Metal



Paper



Certified compostable products & packaging
(included for registration and reporting purposes, with no requirement to collect)

Blue Box Materials



Varies by Community

(O. Reg 101/94: Schedule 1)



Consistent across the Province

(O. Reg 391/21 s. 2)

Designated Materials



Still excluded:

- Hard or soft-cover books
- Flexible plastic used for containment of food (i.e., cling wrap, sandwich bags)
- Packaging & single-use items not primarily made of paper, glass, metal or plastic (i.e., wooden box, bamboo cutlery)
- Garbage bags, recycling bags, compostable waste bags
- Tissues, paper towel and other paper sanitary products
- Alcohol packaging
- Biomedical or hazardous waste
- Items designated under other diversion regulations

Transition Date to December 31, 2025:

PROs must collect/accept the same materials that were included in the WDTA blue box program as of August 15, 2019. Materials that were collected with the blue box, but not designated under the WDTA program (e.g., pots and pans, books, etc.) will not be required to be collected.

January 1, 2026:

PROs must collect/accept all designated materials under the new regulation, but may stop collecting items not designated.

Outline

Producer Responsibility

Legislative Framework

Current vs. Future

Key Concepts & Terms

Eligible Sources

Non-Eligible Sources

Service Standards

Designated Materials

Targets

Timelines

Glossary

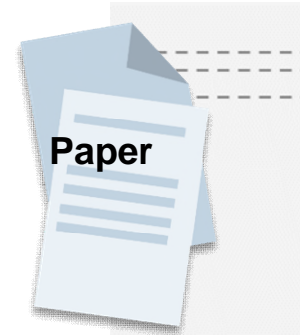
Targets (Minimum Requirements)



60% recovery of blue box materials by 2008

- Announced by the Ministry in 2003
- Not codified in the regulation

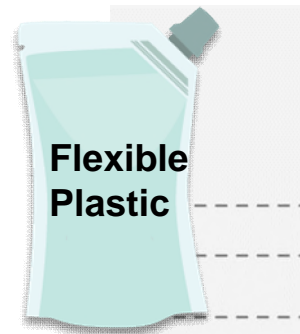
Sources: [2009 Stewardship Ontario Annual Report](#)
[“McGuinty Government builds on Success of Blue Box Program”](#) December 22, 2003



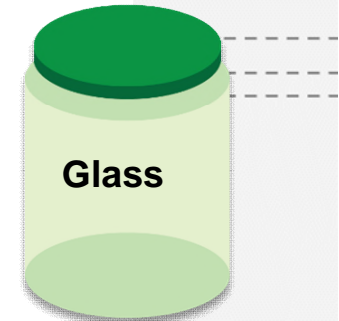
85% by 2030
80% by 2026
 72% in 2018



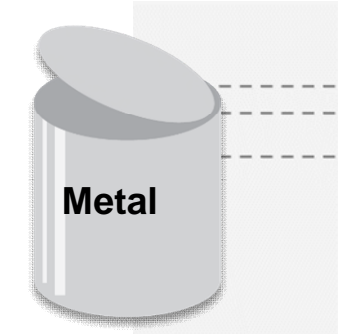
60% by 2030
50% by 2026
 48% in 2018



40% by 2030
25% by 2026
 7% in 2018



85% by 2030
75% by 2026
 68% in 2018



75% by 2030
67% by 2026
 54% in 2018



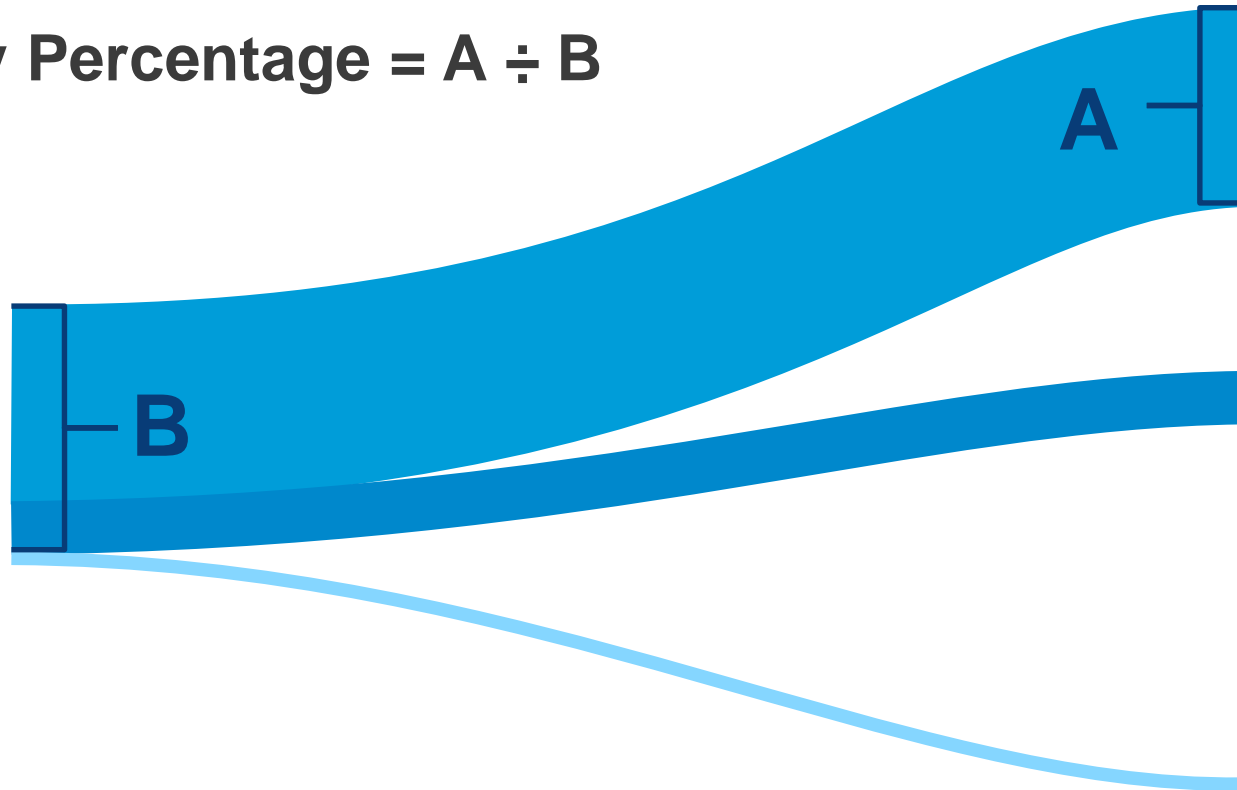
80% by 2030
75% by 2026
 (Data not available for 2018)

(O. Reg 391/21 s. 42)

Targets (Minimum Requirements)

Recovery Percentage = $A \div B$

Weight of material supplied to consumers in Ontario



Recovered Resources

- Marketed for re-use
- Marketed for use in new products or packaging
- Used as aggregate (not more than 15%)
- Used as soil amendment

Un-recovered Resources

- Materials collected, but never marketed for re-use or recycling
- Used as landcover
- Used as fuel or fuel supplement
- Used in incineration (energy-from-waste)
- Landfilled

Materials deposited at ineligible sources

Outline

Producer Responsibility

Legislative Framework

Current vs. Future

Key Concepts & Terms

Eligible Sources

Non-Eligible Sources

Service Standards

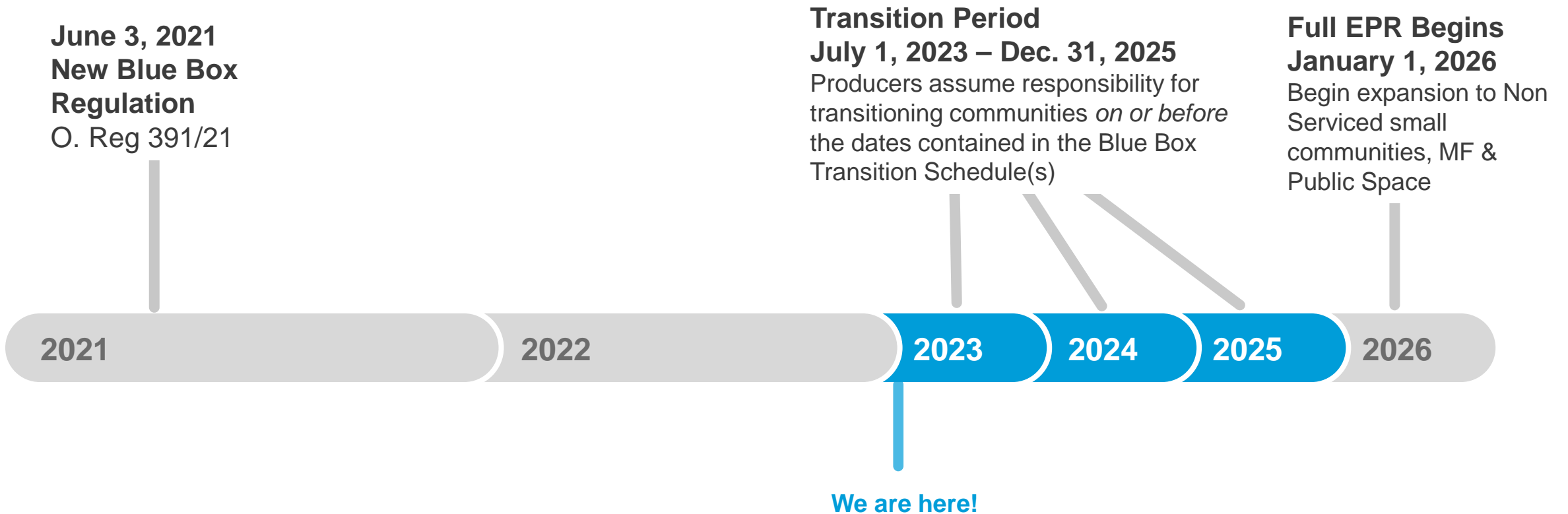
Designated Materials

Targets

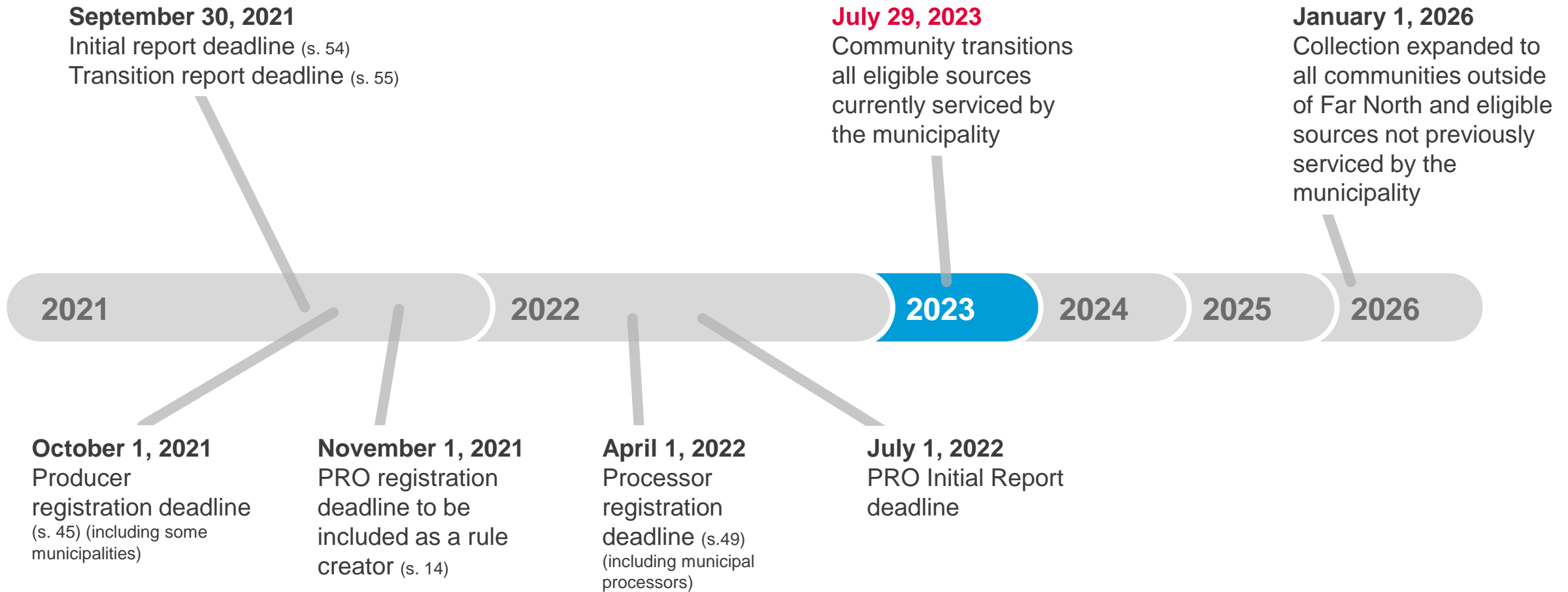
Timelines

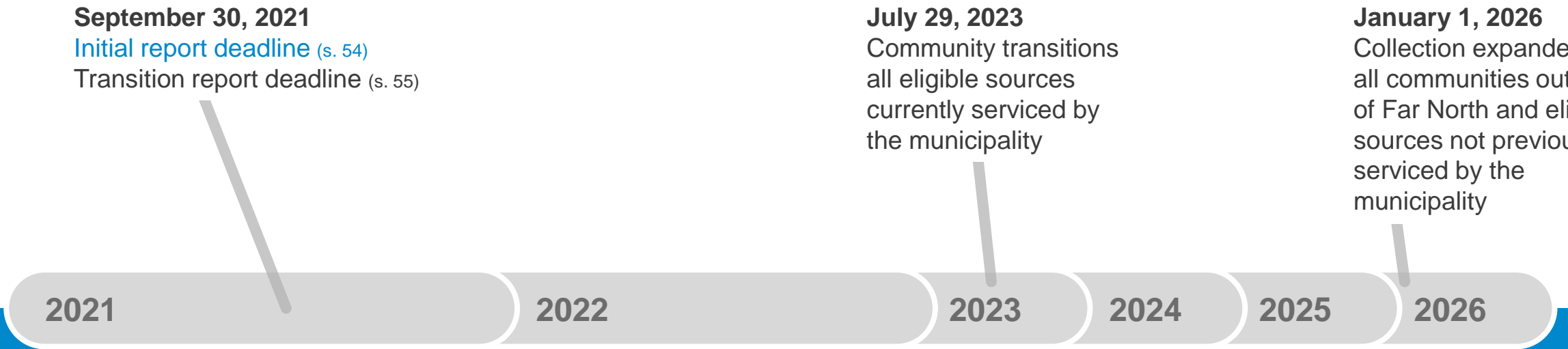
Glossary

Blue Box Transition Timeline



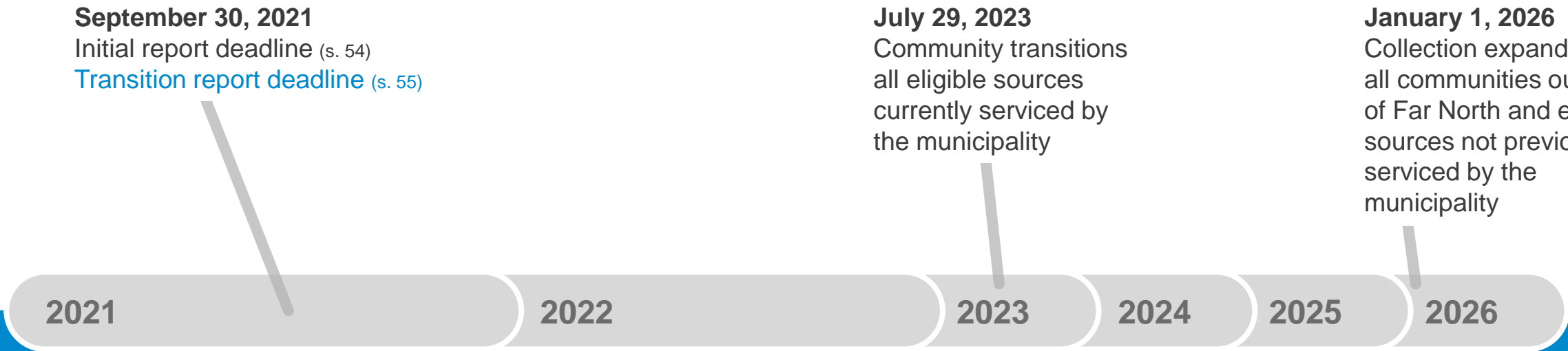
Township of McNab/Braeside will transition on **July 29, 2023**





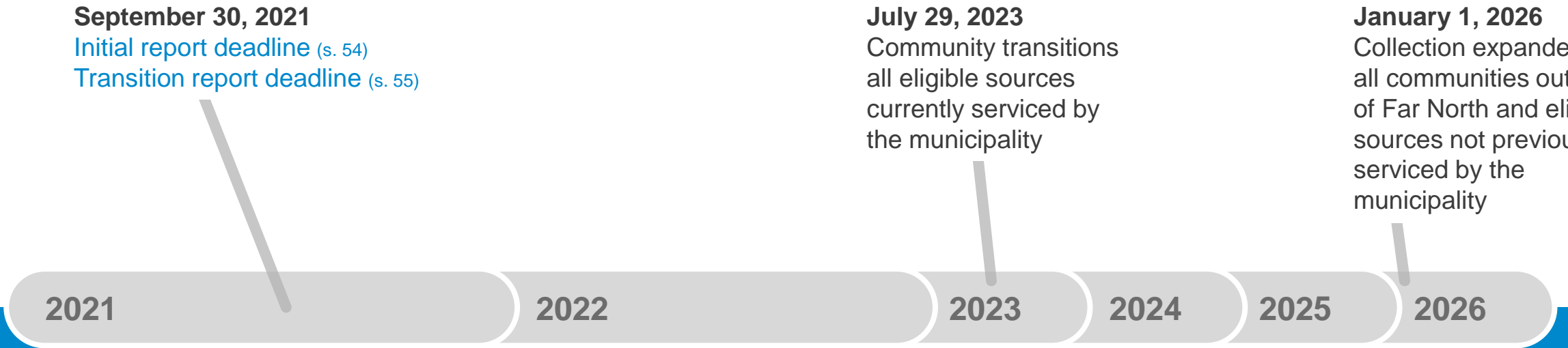
Initial Report

- Submitted to RPRA by the municipality, local services board or First Nation
- Number of
 - residents and residences
 - residences that received collection services
 - facilities that received collection services
 - blue box receptacles in a public space that receive collection
- The municipality, local services board, First Nation or other entity that provides the WDTA blue box program
- Contact information of the person responsible
- Criteria or conditions used to determine which facilities were included in the WDTA blue box program on August 15, 2019.



Transition Report

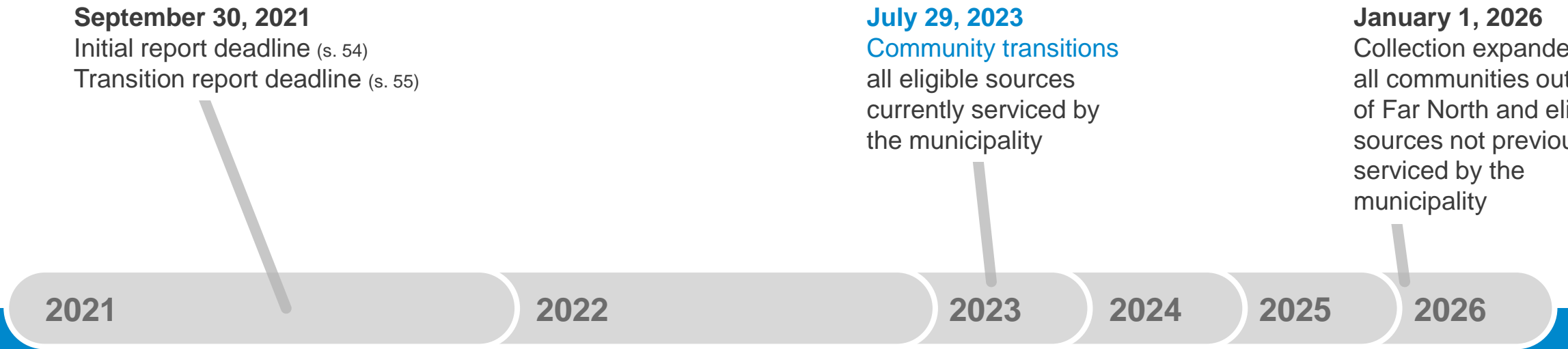
- Submitted to RPRA by the municipality, local services board or First Nation
- Location of
 - residences that receive curbside garbage and blue box collection
 - residences that receive depot garbage and blue box collection
 - every garbage and blue box depot collection site
 - facilities that receive blue box collection services
 - each blue box receptacle in a public space that received collection
- Method to which additional information about the addresses can be provided
- List of blue box materials that are collected
- Frequency residences receive blue box collection
- The number of blue box collection streams
- Languages used for communications about the blue box program



Change Report

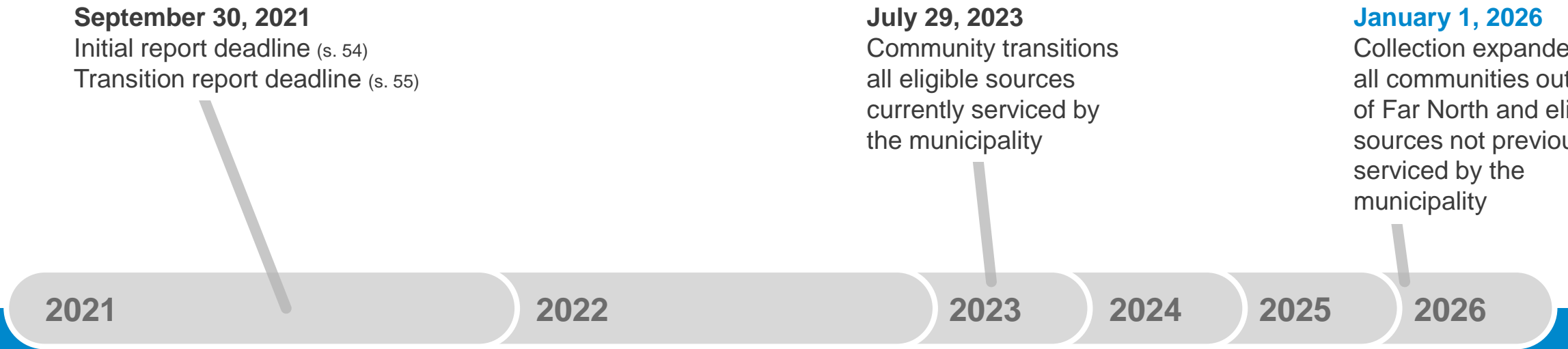
If there is a change to the information submitted in either the **Initial Report** or **Transition Report**, the applicable local municipality or local services board is required to submit the updated information to the Authority through a Change Report.

RPRA will have more information on how to submit a Change Report in the future.



Transition Date

- The Township of McNab/Braeside’s transition date is July 29, 2023.
- At the Special Meeting of Council on July 5, 2022, Township Council made the decision not to sign a Master Service Agreement with Circular Materials Ontario (CMO) to continue providing the residential and facility recycling collection through the Transition Period.
- As a result of this decision to OPT OUT, CMO, on behalf of the producers, is responsible to secure a collection contractor to continue the recycling collection within the Township.
- As of July 29, 2023 all resident questions/complaints regarding the Blue Box Recycling program are to be directed to Circular Materials Ontario or their designated contractor. More information will be posted on the Township website when it becomes available.



End of Transition Period

- Collection expanded to all communities outside the Far North
- Collection expanded to eligible sources not previously serviced by the municipality
- Minimum requirements (targets) for recovery rates come into effect

Producer Registration

- A municipality can be a Producer
- Usually, because of printing and distribution of paper (e.g., tax bill inserts, waste collection calendars, recreation guides, maps, brochures, etc.)
- If a municipality generates more the 9 tonnes of paper, they must register as a Producer (s. 42)



Processor registration

- Submitted to RPRA by the processor
- Name and contact information
- Each material category of blue box materials that is processed at facility
- Location of each site that receives and processes material
- Types of recovered resources that result from processing
- Producers/PROs that have agreements with the processor



Outline

Producer Responsibility

Legislative Framework

Current vs. Future

Key Concepts & Terms

Eligible Sources

Non-Eligible Sources

Service Standards

Designated Materials

Targets

Timelines

Glossary

AMO - Association of Municipalities of Ontario

CCS – Common Collection System

CIF – Continuous Improvement Fund

CMO – Circular Materials Ontario

FN – First Nation

M3RC - Municipal Resource Recovery and Research Collaborative

MECP - Ministry of the Environment, Conservation and Parks

MFAM - Municipal Funding Allocation Model

MSA – Master Services Agreement

PRO - Producer Responsibility Organization

RPWCO - Regional Public Works Commissioners Office

RPRA – Resource Productivity and Recovery Authority

RRCEA – Resource Recovery and Circular Economy Act (2016)

SOW – Statement of Work

WDTA – Waste Diversion Transition Act (2016)

WFOA – Waste Free Ontario Act (2016)

Blue Box Materials - includes blue box packaging, paper products and packaging-like products (Source: [O. Reg 391/21](#))

Blue Box Packaging - includes primary, convenience, or transport packaging that is provided with a product, an ancillary product that is integrated into the packaging, and a single-use product that is supplied with a food or beverage product, that facilitates the consumption of that product (i.e., straw, cutlery) (Source: [O. Reg 391/21](#))

Collection Contractor – service provider of blue box collection

Common Collection System (CCS) – Blue Box collection and hauling services from municipality/FN to receiving facility

CCS Service Provider - those that carry out the work of the blue box program, including curbside collection, operation of depots, collection from depots and transport to receiving facilities.

Contractor – municipality/FN that signs contract with CMO to provide collection services during transition

Depot – a location that residents can deliver blue box material

Eligible Community – municipality or local services board or First Nation (FN) community, not located in the Far North (as defined in the Far North Act, 2010, S.O. 2010, c. 18) (Source: [O. Reg 391/21](#))

Eligible sources - any residence or facility (e.g. long term care or retirement) in an eligible community (Source: [O. Reg 391/21](#))

FPR (Full Producer Responsibility) - producers are fully accountable and financially responsible for their products and packaging once they reach their end of life and are disposed

Facility – a building containing more than one dwelling unit (e.g. apartment or condominium), non-profit retirement home, non-profit long-term care facility or school serviced under the WDTA as of August 15, 2019 (Source: [O. Reg 391/21](#))

Processor - an entity that processes, for the purpose of resource recovery, blue box materials (Source: [O. Reg 391/21](#))

Producer Responsibility Organization (PRO) - has entered into an agreement with a Producer for the purposes of carrying out one or more of the responsibilities relating to blue box material (Source: [O. Reg 391/21](#))

Producers - the brand holders, importers, or retailers of products that contain blue box materials (Source: [O. Reg 391/21](#))

Receiving Facility – a facility at which Blue Box Material collected from Eligible Sources or from public space collection receptacles or at depots is first received. (Source: [RFP for Receiving Facilities, Appendix A](#))

Resource Productivity & Recovery Authority ([RPRA](#)) - the regulator mandated by the Government of Ontario to enforce the province's circular economy laws

Subcontractor – work (e.g. collection contract) subcontracted by the municipality/FNs (Contractor) to a private company – the company may be referred as the collections contractor or service provider.

Transfer station - means a waste disposal site used for the purpose of transferring waste from one vehicle to another for transportation to another waste disposal site; - from R.R.O. 1990, Regulation 347 General — Waste Management

- [The Waste Free Ontario Act, 2016](#)
 - [Resource Recovery and Circular Economy Act](#)
 - [Ontario Regulation 391/21](#)
 - [Waste Diversion Transition Act](#)
- [Waste Diversion Act, 2002](#)
 - [Blue Box Program Plan, 2003](#)
- [Environmental Protection Act, 1990](#)
 - [Ontario Regulation 101/94](#)
- [Resource Productivity and Recovery Authority](#)
 - [Blue Box Regulation Webpage](#)
 - [Municipalities Webpage](#)